

2024 ROBINSON TOWNSHIP COMMUNITY RECREATION PLAN

August 2024



2024 ROBINSON TOWNSHIP COMMUNITY RECREATION PLAN

Prepared for: Robinson Township Park Board and Robinson Township

RESOLUTION OF ADOPTION:

Park Board

Chairperson: Mary Twa Secretary: Dennis Berens

Member(s): David VanderMeer, Erin Chittenden

Board Representative: Christine Saddler

Board of Trustees

Supervisor: Frank Johnson Clerk: Christine Saddler Treasurer: Bonnie Hayward

Trustees: Travis Vugteveen & Travis Bergman

Deputy Clerk: Jane Longstreet Deputy Treasurer: Shelley Witte

**2024 ROBINSON TOWNSHIP COMMUNITY RECREATION PLAN
CONTENTS**

	Page
INTRODUCTION.....	1
COMMUNITY DESCRIPTION.....	2
Description and Location.....	2
Demographics, Housing and Income.....	3
Natural Features.....	4
Existing Land Use.....	4
ADMINISTRATIVE AND FINANCING STRUCTURE.....	5
Organizational Structure.....	5
Recreation Budget.....	6
Public Organizations.....	6
DESCRIPTION OF PLANNING PROCESS.....	7
RECREATION INVENTORY.....	8
Township Facilities.....	8
State Facilities.....	8
County Facilities.....	9
School Facilities.....	10
Private Recreation Facilities.....	10
Township Recreation Programs.....	13
GOALS, OBJECTIVES, AND ACTIONS.....	14
Physical Characteristics.....	15
ACTION PROGRAM.....	16
APPENDIX A.....	17
Community Survey.....	17-21
APPENDIX B.....	22
Soils Map	22
APPENDIX C.....	23
Map of Robinson Township Park	23

INTRODUCTION

The 2024 Robinson Township Community Recreation Plan has been prepared by the Robinson Township Park Board. The Plan will serve as a guide for the Township management of park and recreational facilities and goals for future acquisition and open space preservation.

The Plan presents an assessment of Robinson Township's recreation needs and opportunities. Reviews of program accomplishments, demographic data and the results of the recently conducted Community Survey (Appendix A) will be the basis for these adjustments and are intended to be an integral part of the development process. The Plan considers the existing public and private facilities within the Township, the demand for additional facilities to better suit current land and environmental conditions, and the means for funding this project during the course of the five-year development.

The 2024 Robinson Township Community Recreation Plan replaces the Plan adopted in 2017, and acts as a guide for the Township's leadership on park and recreation facilities in the coming years. The Plan also enables the Township to apply for Federal and State grant funds for parks and recreation facilities administered by the Michigan Department of Natural Resources and others.

COMMUNITY DESCRIPTION

Description and Location

Robinson Township is located in the northwestern portion of Ottawa County, west of Grand Rapids and southeast of Grand Haven. Figure 1 shows the location of Robinson Township.

Robinson Township has a total area of 39.5 square miles with 0.8 square miles of it being water. The northern border of the Township is the Grand River and bayous. The Township is mostly agricultural, but land availability is quickly fading as more people are building homes. Robinson Township was originally marshes, open fields, woodlands and wetlands but the land has since been drained and converted into housing plots, farmland and impermeable surfaces.

Robinson Township has a beautiful rural setting and is conveniently surrounded by urban communities of Holland, Allendale, and Grand Haven. Some of the locations within the Township, notably the Van Lopik and Limberlost developments, have proven to be unfit for residential use because of the high risk of flooding. There have been at least five major floods recorded since 1994 as well as other significant floods in the past 30 years. An ice jam flood where water reached levels of 18.3 feet in January of 2005, caused widespread evacuation and suspended occupancies for some homes. The flood affected 30 homes on Van Lopik, and 20 other homes on Limberlost according to the National Weather Services because of contaminated water sources, septic systems and a lack of gas and electric services. In 2005, the township received a 5.5-million-dollar grant from FEMA to buy out residents in this area. The grant calls for areas purchased to be converted to open space for public recreation.

As the area around and within Robinson Township continues to increase in population growth, the community will see an increased need for recreational opportunities. Robinson Township would provide the perfect setting for a recreational area that showcase the natural wetlands and wooded areas found along the Grand River.

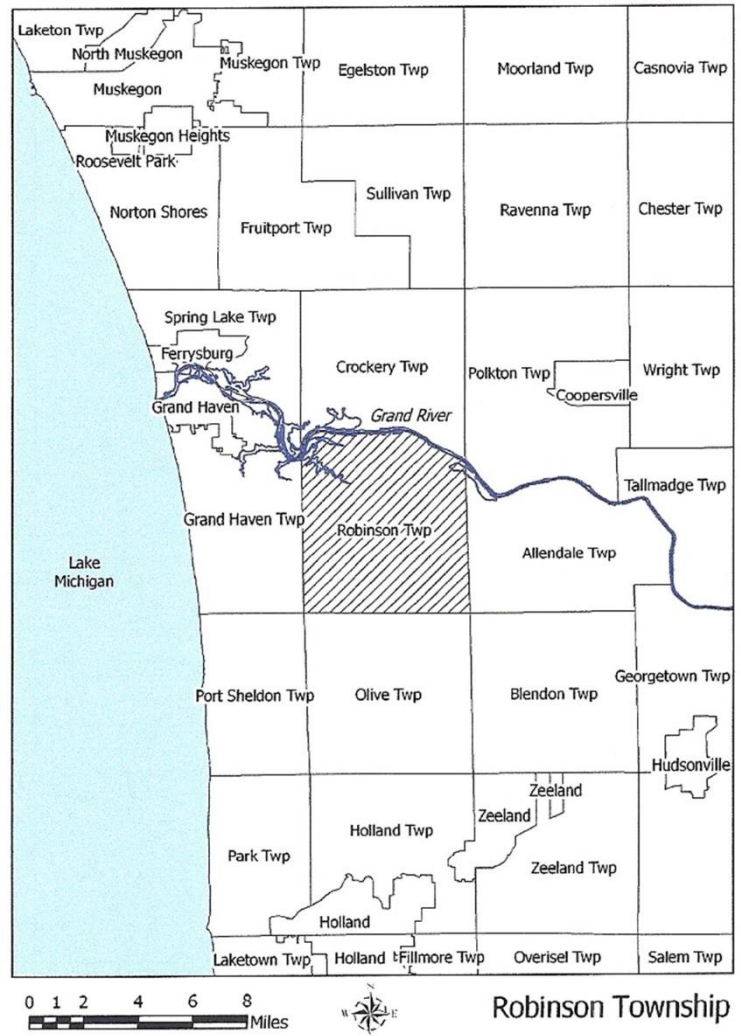


Figure 1. Robinson Township Location

Demographics, Housing and Income

As of 2021, Robinson Township had a total population of 6,366 residents, and of those residents 72% were adults. Robinson Township has a total of 2,238 housing units of which 28 units are used for seasonal or recreational use, and 462 of the units are currently vacant. Currently there is a density of 56 houses per square mile, and 154 people per square mile. Population growth between the 2010 and 2020 census years (see Figure 2). Indicates that growth was more than double the previous decade 22.3% compared to 8.9% but the growth is estimated to slow to 18.3% between 2020-2030

Population and Growth Rates in Ottawa County

Unit of Government	Population						Population Growth						
	Census					Projections ²		Actual % Change				Projected % Change	
	1970	1980	1990	2000	2010	2020	2030	1970-1980	1980-1990	1990-2000	2000-2010	2010-2020	2020-2030
<i>City/Village</i>													
Coopersville	2,129	2,889	3,421	3,910	4,275	4,836	5,396	35.7%	18.4%	14.3%	9.3%	13.1%	11.6%
Ferrysburg	2,196	2,440	2,919	3,040	2,892	2,944	2,996	11.1%	19.6%	4.1%	-4.9%	1.8%	1.8%
Grand Haven	11,844	11,763	11,951	11,168	10,412	9,859	9,306	-0.7%	1.6%	-6.6%	-6.8%	-5.3%	-5.6%
Holland (Ottawa pt)	23,133	21,767	25,086	27,846	26,035	26,301	26,567	-5.9%	15.2%	11.0%	-6.5%	1.0%	1.0%
Hudsonville	3,523	4,844	6,170	7,160	7,116	7,805	8,494	37.5%	27.4%	16.0%	-0.6%	9.7%	8.8%
Spring Lake	3,034	2,731	2,537	2,514	2,323	2,181	2,039	-10.0%	-7.1%	-0.9%	-7.6%	-6.1%	-6.5%
Zeeland	4,734	4,764	5,417	5,805	5,504	5,560	5,616	0.6%	13.7%	7.2%	-5.2%	1.0%	1.0%
Holland (Allegan pt) ¹	3,346	4,514	5,792	7,202	7,016	7,782	8,547	34.9%	28.3%	24.3%	-2.6%	10.9%	9.8%
<i>Township</i>													
Allendale	3,554	6,080	8,022	13,042	20,708	32,376	44,044	71.1%	31.9%	62.6%	58.8%	56.3%	36.0%
Blendon	2,927	3,763	4,740	5,721	5,772	6,404	7,036	28.6%	26.0%	20.7%	0.9%	10.9%	9.9%
Chester	1,786	2,034	2,133	2,315	2,017	1,947	1,877	13.9%	4.9%	8.5%	-12.9%	-3.5%	-3.6%
Crockery	2,861	3,536	3,599	3,782	3,960	4,172	4,385	23.6%	1.8%	5.1%	4.7%	5.4%	5.1%
Georgetown	17,615	26,104	32,672	41,658	46,985	56,385	65,785	48.2%	25.2%	27.5%	12.8%	20.0%	16.7%
Grand Haven	5,489	7,238	9,710	13,278	15,178	18,728	22,277	31.9%	34.2%	36.7%	14.3%	23.4%	19.0%
Holland	10,849	13,739	17,523	28,911	35,636	47,543	59,449	26.6%	27.5%	65.0%	23.3%	33.4%	25.0%
Jamestown	2,926	3,546	4,059	5,062	7,034	9,002	10,970	21.2%	14.5%	24.7%	39.0%	28.0%	21.9%
Olive	2,072	2,449	2,866	4,691	4,735	5,622	6,509	18.2%	17.0%	63.7%	0.9%	18.7%	15.8%
Park	6,639	10,354	13,541	17,579	17,802	20,604	23,406	56.0%	30.8%	29.8%	1.3%	15.7%	13.6%
Polkton	1,962	2,027	2,277	2,335	2,423	2,531	2,638	3.3%	12.3%	2.5%	3.8%	4.5%	4.2%
Port Sheldon	1,078	2,206	2,929	4,503	4,240	5,101	5,962	104.6%	32.8%	53.7%	-5.8%	20.3%	16.9%
Robinson	2,051	3,018	3,925	5,588	6,084	7,443	8,802	47.1%	30.1%	42.4%	8.9%	22.3%	18.3%
Spring Lake	4,979	6,857	8,214	10,626	11,977	14,245	16,513	37.7%	19.8%	29.4%	12.7%	18.9%	15.9%
Tallmadge	4,883	5,927	6,300	6,881	7,575	8,305	9,035	21.4%	6.3%	9.2%	10.1%	9.6%	8.8%
Wright	2,983	3,387	3,285	3,286	3,147	3,087	3,028	13.5%	-3.0%	0.0%	-4.2%	-1.9%	-1.9%
Zeeland	2,934	3,711	4,472	7,613	9,971	13,691	17,410	26.5%	20.5%	70.2%	31.0%	37.3%	27.2%
Ottawa County	128,181	157,174	187,768	238,314	263,801	316,671	369,541	22.6%	19.5%	26.9%	10.7%	20.0%	16.7%
Michigan	8,881,826	9,262,044	9,295,287	9,938,444	9,883,640	n/a	n/a	4.3%	0.4%	6.9%	-0.6%	n/a	n/a

Source: U.S. Census Bureau, West Michigan Regional Planning Commission

¹ Part of the City of Holland is located in Allegan County

² Projection data provided by West Michigan Regional Planning Commission

Prepared by: Ottawa County Planning and Performance Improvement Department (06/15/11)

Figure 2. Population and Growth Rates for Robinson Township.

The median household income of Robinson Township according to the 2020 Census was \$86,951. The most common industries for the Township members to work in are manufacturing, education and health care. Currently 78.7% of the township population (over 16 years of age) participates in the labor force.

Natural Features

The majority of Robinson Township (approximately 80%) is made up of agricultural and residential land. The Northern boundary of the township is defined by the Grand River. Other significant sources of water are a couple of lakes scattered across the Township. There are also four bayous located in the northwest portion of the Township, which are Stearns Bayou, Clark Bayou, Kirby Bayou (Ruby), and Connor Bayou. Located in the township are six rivers/creeks and one lake, which are Stearns Creek, Little Robinson Creek, Wolf Creek, Bass Creek, Bear Creek, Bass River, and Max Lake. Swamps are located alongside the bayous and rivers. Lastly, there are ditches and drainage systems scattered throughout the agricultural land in the Township for farming purposes.

Existing Land Use

Robinson Township's land is mainly used for residential (47.7%) and agricultural (41.7%) functions. The rest of the land is used for commercial purposes.

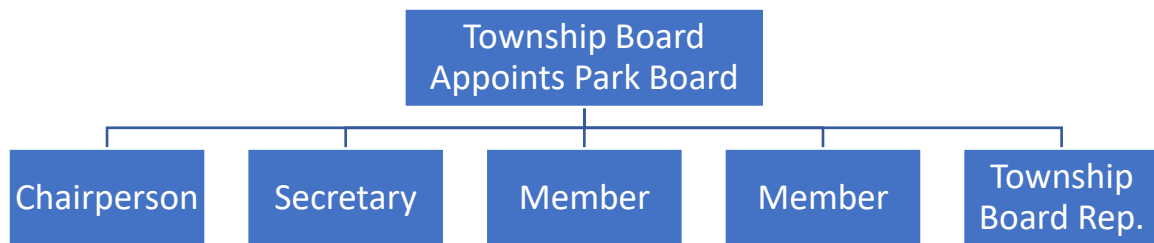
ADMINISTRATIVE AND FINANCING STRUCTURE

Organizational Structure

Robinson Township's parks and recreation programs are administered by the Park Board (see below), which was formed under the enabling Act 157 of 1905 and is governed by a Park Ordinance adopted in 2001. Committee members are appointed by the Board of Trustees and have staggered memberships. The committee is directly responsible to the township Board of Trustees and serves in an advisory capacity.

The Park Board was formed in order to afford citizen participation in the affairs of the Township government for the purpose of determining community needs and means of meeting such needs through the government of the Township. They work to formulate park development plans, recommends construction projects and financing procedures, administers recreation programs and recommends maintenance operations and equipment needs for Township Board's review, approval and execution. The official actions of the Township such as public hearings, implementation of projects, allocation of funds for grants or capital projects or programs or the establishment of ordinances and related regulations and procedures are the responsibility of the Board with assistance from the various commissions and committees.

Figure 3 Robinson Township Park Board Organizational Chart



Recreation Budget

Robinson Township's recreation budget for the fiscal year 2024-2025 is \$50,000. This budget helps maintain the Robinson Township Park and planning towards future recreation facilities. Currently, numerous volunteers are involved in the park and recreation programs, park improvement projects, and community projects. There are recreation programs directed and sponsored by Robinson Township.

The Township residents who are active in recreation programs participate through the following organizations:

Public Organizations

- Northwest Ottawa Recreation Authority (NORA) partners with Ferrysburg, Grand Haven Township, Grand Haven City, Port Sheldon Township, and Robinson Township who subsidize costs for area-wide participation. Programs are primarily held at Grand Haven facilities with participation depending on the types of activities offered.
- The City of Zeeland provides recreation programs that draw from a wide area around Zeeland, which includes Robinson Township.
- Robinson Elementary School and the Little Hearts Day Care Center which are located across the street and along the outside perimeter of the park use it frequently.
- Loutit District Library uses the Park for summer programs

DESCRIPTION OF PLANNING PROCESS

The planning process used to prepare the 2024 Robinson Township Community Recreation Plan involved four phases: data collection, analysis, needs identification, and plan development. The data collection phase involved collection and analysis of demographic data, including data from the 2020 U.S. Census

The analysis phase included consideration of the historical flooding events in the area. There have been at least six major floods recorded since 1994 as well as other significant floods in the past 30 years. With this in consideration, a preliminary list of recreation deficiencies and needs was developed, and a preliminary set of plan goals and objectives was formulated to fit the possibility of future flooding.

Public input regarding park and recreation needs was solicited via a written and electronic survey that was distributed to households in the Township. The survey was circulated in the fall of 2023. The survey was distributed in the Winter Newsletter in combination with a survey link on the Township website. Comments received in the survey were considered in development of the Draft Recreation Plan. See appendix A

The Park Board reviewed and approved the proposed 5 Year Action Plan and draft recreation plan at a meeting on August 5, 2024. The plan was made available for public comment on August 6, 2024. After the 30-day public comment period all comments and recommendations from the public and Board of Trustees were reviewed at a public hearing on September 11, 2024. The park board reviewed recommended changes and incorporated them, as appropriate, into the final Recreation Plan. The Board of Trustees adopted the plan on September 11, 2024.

The planning process for the 2024 Robinson Township Community Recreation Plan continues with each meeting of the Robinson Township Park Board. Each meeting is posted so that residents may attend to make comments about the park and open space in the Township. Using this input, the Robinson Township Park Board will continue to make applications for future grants and pursue improvements to existing facilities and open spaces.

RECREATION INVENTORY

Over the past ten years the population of Robinson Township has grown steadily. However, the availability of recreational facilities and services has not grown with it. Robinson Township currently has only one Township Park. Since Robinson Township currently offers no organized recreation programming, residents must rely on neighboring communities that do. Robinson Township currently owns 45 acres of undeveloped land. Robinson Township's Recreation Inventory is summarized in Table 1.

Township Facilities

Robinson Township Park: Approximately 45-acres of land owned by Robinson Township is located south of the Township Hall on Buchanan Street. The park has one softball field, a soccer field, football field, a tennis/pickleball court, covered picnic area, trail system and playground. Onsite drinking water is available. A half-court basketball court was installed in 2022 which replaced the beach volleyball court. Other recent improvements include additional bleachers and benches. Security cameras have been installed in various locations throughout the park to help increase the security.

River Properties: In 2005 Robinson Township was granted two three-million acquisition grants for properties along Van Lopik Ave and Limberlost Lanes along the Grand River. As a result, Robinson Township owns 18 parcels along the Grand River. These open spaces are maintained in as much of a natural state as possible.

Robinson Township Cemetery is a 4-acre parcel located at the corner of 108th Ave and North Cedar. It is adjacent to the Idema Explorers Trail allowing for easy access for exploration of the many historic markers highlighting the rich history of the Township.

Robinson Township Cemetery-South: is a 5-acre site located a half-mile South of North Cedar on 108th Ave. it is being developed during the summer of 2024. Plans include multiple walking paths and benches. A featured area will be a paved meditation path labyrinth. The labyrinth area is designated for the placement of cremation ashes at random locations under the authority of the Township. The meditational aspect will be enhanced by the planting of flowers attractive to butterflies.

State of Michigan Facilities

D.N.R. Launch Site: Is a 5-acre launch facility on the Grand River at the end of 118th Avenue. The park has two boat launch ramps, 650 feet of river frontage, parking for 60 cars and one primitive pit toilet restroom facility. The launch ramp is owned by the State of Michigan and is maintained by the Ottawa County Road Commission. The Park is used by residents from throughout the County.

Bass River State Recreation Area: Bass River State Recreation Area is approximately a 1,100-acre site located in central Ottawa County. Eventually the Bass River Recreation Area will occupy approximately 3,000 acres and provide the region with nearly three miles of river frontage, a large quarry lake attached to the river and hundreds of acres of natural woodland and floodplain for all forms of casual recreation.

Open Land a 103-acre vacant piece of land owned by the State of Michigan is open to the public. It is located along the Grand River off of 132nd Ave.

M-231 Bridge Pathway The seven-mile roadway is one of only four bridges crossing the Grand River in Ottawa County. The massive Grand River Bridge is three quarter mile long, making it the seventh longest bridge in the State. The Bridge includes a designated pathway for bicycles and pedestrians that connects pathways on the north and south side of the Grand River and helps create an inter-connected pathway network which spans the West Michigan Region. The Bridge Pathway has been officially named to honor a local historical figure Henry E. Plant. Sgt. Plant was awarded the Congressional Medal of Honor in 1896 for his valor at the Battle of Bentonville during the Civil War, being the first person in Ottawa County to receive this distinction. His former farm is located on the M-231 route in Crockery Township.

County Facilities

Riverside Park: Is a 64-acre park located on the Grand River on North Cedar Drive just east of 104th Avenue. The park facilities include four (fee required) boat launching ramps, a 22- by 40-foot open shelter structure, two pit toilet restrooms, picnic tables and grills and parking for 14 cars and 43 car/trailer units at the launch ramp and approximately 80 cars at the picnic area. A maintained lawn area with trees, which is available for general use, occupies approximately 1,200 feet of the nearly 4,350 feet of river frontage. The balance of the park, approximately 65 percent, is natural and receives limited use. The park is owned and operated by Ottawa County and is heavily used most of the year. Barrier free access, fishing pier and picnic and pathway improvements are also offered facilities.

Connor Bayou Park: The 142-acre property includes nearly a mile of Grand River frontage and a diversity of natural communities including wetlands, mature mixed hardwood and pine forest, and remnants of prairie plant communities. The site offers outstanding views of the Grand River and expansive wetlands to the north. Amenities and Activities include a woodland cabin, picnic tables, hiking trails and boardwalks, accessible kayak and canoe launch, river overlook decks, fishing docks, rustic toilets, and paved parking area, All facilities, except hiking trails, are universally accessible.

Stearns Creek Park: Located at the headwaters of the Grand River's Stearns Bayou, Stearns Creek Park is a key piece of Ottawa County's Grand River Greenway, a system of protected natural lands along the river and its tributaries. Opened in 2019, the original 118-acre acquisition south of the creek features the 2.1-mile Helstrom Family Trail System, as well as benches and picnic tables donated by members of the Vollmer Family who once lived on this site.

In late 2021 an additional 28-acre parcel north of Stearns Creek was purchased for \$242,000 utilizing funds including an additional \$95,000 from the Michigan Natural Resources Trust Fund and an additional gift from John J. Helstrom in memory of parents, Mathias and Esther Helstrom.

In honor of this gift, the new area has been designated as the Helstrom Family Natural Area, and 0.8 miles added to the Helstrom Family Trail System. The Helstrom Family, who lived in West Michigan, had a great appreciation of nature and the need to protect it for future generation

The north section of the park is located at 13594 136th Ave. The south section is located at 13600 132nd Ave.

Johnson Street Forest: Located at 12401 Johnson St., Johnson Street Forest is 50 acres of mixed hardwoods. There are no designated trails or restroom facilities, but the site offers a small parking, information kiosk, off-trail hiking and cross-country skiing. Dogs are allowed on or off leash, and the area is open to hunting per DNR Laws.

Robinson Forest: Located at 13995 104th Ave., Robinson Forest is 80 acres of mixed hardwoods, conifers and a regenerating oak stand. There are no designated trails or restroom facilities, but the site offers a small parking, information kiosk, off-trail hiking and cross-country skiing. Dogs are allowed on or off leash, and the area is open to hunting per DNR Laws.

Idema Explorers Trail is a non-motorized walkway located along North Cedar. A 3.9 mile segment that stretches between Connor Bayou Park and Riverside Park was constructed in 2017. There is a trailhead located at the M-231 overpass. A 2.5-mile extension that will extend from Connor Bayou Park, over the Stearns Creek Bridge and connect to the existing path at 144th Ave is currently under construction and is part of a network of trails throughout Ottawa County. A parking area for pedestrians is located west of the M-231 bridge and leads to the 4.2-mile Spoonville Trail between North Cedar Drive and Nunica.

School Facilities

The Grand Haven and Zeeland School Districts provide most of the facilities and program opportunities for recreation for Township residents. There is one elementary school in the Township and it is owned and operated by the Grand Haven Area Public Schools.

Robinson Elementary School: The school is situated on a 20-acre parcel on the west side of 120th Ave south of Buchanan Street. The school has an indoor auditorium/gymnasium used for school functions, shuffleboard, basketball, volleyball, aerobics, meetings, dinners and nonalcoholic receptions. Outdoor facilities include three basketball goals, five swing sets with slides, one soccer field, two junior softball fields and one small play area with related equipment. The play apparatus and sport fields are scaled for the elementary school user and are not particularly well suited for older age group or general community use. The only restroom facilities are located within the school building and are available only during school hours and on a very limited basis.

Private Recreation Facilities

Three privately owned and operated commercial facilities are available to the paying public in the Township. Three are located on or near the south bank of the Grand River and one is located at the intersection of M-45 and 104th Avenue in the southeast portion of the Township.

Olson's Southern Grand Marina (formerly Dick's Landing): Is located on 8.8-acres on North Cedar Drive, has one boat launching site, 78 boat slips and one boat lift for larger boats (16 ft. – 42 ft.). Facilities also include a boat storage totaling 11,200 sq. feet and complete bath facilities.

River Haven Marina: Is situated on approximately 3-acres of Grand River frontage at 15006 120th Avenue. This development includes 90 boat slips, two boat launching sites, two modern restrooms and 660 feet of river frontage. The marina is approximately 11.5 miles from Lake Michigan.

Pigeon Creek Golf Course: Developed on a 160-acre site, is located at 10195 120th Avenue and features all the hallmarks of Michigan links style golf. The course gives all levels of golfers an enjoyable experience offering four different tees to choose from. The course also offers a few risk and reward holes that are sure to get you excited every time you step to the tee. Along with a beautifully maintained course is a 12-tee driving range and 2 practice greens to hone your golf game before heading out for your relaxing round. Other features are a practice facility and experienced PGA golf professionals for lessons. An event center was added in 2023.

Table 1: Recreation Inventory

Facility Name	VanLopik/ Limbertlost	Robinson Twp Park	DNR Launch Site	Bass River State Rec. Area	Riverside Park	Stearns Creek Park	Connor Bayou	Johnson St. Wildlife Mgt Area	Robinson Twp Cemetery -South (Fall 2024)	Robinson Forest	Robinson Elementary School
Ownership	Twp	Twp	State	State	Ottawa County	Ottawa County	Ottawa County	State	Twp	County	State
Acres		45	5	1,100	64	146	142	50	5	80	20
Playground		X									X
Open Shelter		X			X						
Open Lawn	X	X		X	X						
Softball Field		1									
Soccer Field		1									1
Jr. Softball Field											2
Trails		X		X	X	X	X		X		
Meditation Walking Path									X		
Boat Launch			2	1	4						
Boat Slips											
Boat Lift											
Boat Storage											
Fishing Pier					1		1				
Drinking Fountain		X									
Portable Restroom		X				X					
Pit Restroom			X		2		w rental				
Modern Restroom											
Gymnasium (indoor)											X
Bath Facilities											
Basketball Court (Outdoor)		X									X
Tennis Court		X									
Pickleball Court		X									
Kayak Launch			X	X							
Kayak Rental											
Picnic Area		X	X		X	X					

Township Recreation Programs

Robinson Township participates in the financial and administrative support of a variety of programs that involve the residents of the community. Summer recreation, athletic programs and art and craft programs are examples of this participation.

The programs that account for the greatest number of participants are the organized sports and programs from agencies such Northwest Ottawa Recreation Authority (NORA). NORA serves as primary sponsor with Ferrysburg, Grand Haven Township, Grand Haven City and Robinson Township. Robinson Township withdrew from being a participating member in 2024 to allow NORA a better chance at passing an operating millage. Robinson Township will continue to make financial contributions for residents to participate in area-wide programs. Programs are primarily held at Grand Haven facilities with participation depending on the types of activities offered. Robinson Township schedules the majority of the sporting projects in the Township Park.

Generally, Robinson Township resident participation averages between 5 and 20 percent of total attendance depending on the type of recreation. Limited participation programs are those that appeal to special interest groups such as swimming specialties, tennis and special instruction activities. They normally draw from four to over twenty Township participants. The more popular programs like open swimming, softball, soccer, football, volleyball and basketball that have league type involvement draw larger numbers of Township participants. These activities average approximately fifteen residents per activity with participation in open swim, open gym and some league activities attracting over seventy Township residents in a season.

Robinson Township residents also participate in programs provided by the City of Zeeland. The main attraction is the Little League Baseball Program that draws from a wide area around Zeeland. The actual number of Township participants in Zeeland programs is not known, however estimates range from thirty to over fifty people. Some program activities include football, baseball, basketball, swimming and equestrian.

GOALS, OBJECTIVES, AND ACTIONS

Recreation **Goals** establish the long-range recreation policy for Robinson Township. Short-term recreation **Objectives** are general efforts that are intended to help achieve recreation goals. Recreation **Actions** are specific measures that implement the recreation objectives. **Physical characteristics** are the features of the land that are being affected by the goals. **Demographic Characteristics** are the Robinson Township population features that are being affected by the goals.

GOAL 1: Plan, fund, and make improvements to Robinson parks and open spaces

OBJECTIVE: Increase interest and usage of township recreation facilities.

POTENTIAL ACTIONS:

- Develop additional interpretive facilities near the scenic areas such as overlooks, trails, and benches.
- Preserve and document Robinson Township history through protection of historic places, documentation and signage.
- Implement an ecological management plan for the Park to promote growth of desired vegetation and control invasive species
- Improvements to Robinson Township Park to increase park usage such as signage and fencing.
- Improvements to recreational offerings such as pickleball courts or basketball hoops.
- Increase security

PHYSICAL CHARACTERISTICS:

Robinson Township Park is located near the Township offices on sandy soils with rolling topography typical in the relic dunes of the region. Vegetation is mixed deciduous with several areas of maintained grass and sports fields. Open space areas are typically being managed for white pine and native vegetation in coordination with Ottawa County Parks.

DEMOGRAPHIC CHARACTERISTICS:

There are no residents in the open space or park properties.

GOAL 2: Plan, develop, and/or support activities held within Robinson Township Park

OBJECTIVE: Increase usage of Robinson Township Park

POTENTIAL ACTIONS:

- Have organized events and activities
 - Pickleball tournaments
 - Farmer's Market
 - Food Truck Events
- Improved signage

AFFECTED DEMOGRAPHIC AND PHYSICAL CHARACTERISTICS

Physical Characteristics

Water and Soil: Affected in the same manner as previous goal.

DEMOGRAPHIC CHARACTERISTICS:

There are no residents in the open space or park properties.

ACTION PROGRAM

The plan actions stated in the Goals, Objectives, and Actions section represent acquisition projects or recreational facility development. The following goals and objectives were structured to fulfill needs and to serve as guidelines for development of the five-year action and financial programs. The plans are intended to be flexible enough to be responsive to changing attitudes and trends and to accommodate opportunities as they occur.

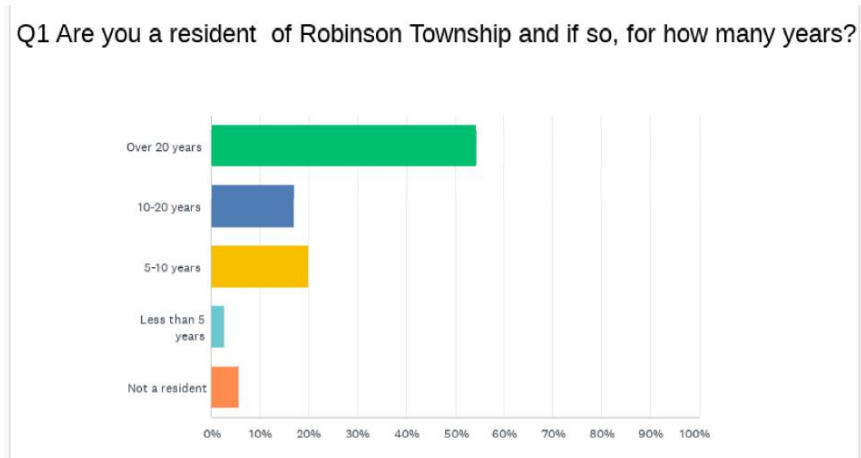
- Improve walking trails access through expansion of paths and signage which will give an open space low impact use for the public that will promote a safe, meaningful and attractive activity.
- Preserving and reclaiming scenic, natural, historic and environmentally sensitive or unique areas for appropriate levels of public use and enjoyment.
- Implement organized activities to encourage use of the Park.
- Connection of bike paths to existing bike routes into Grand Haven.

It is anticipated that opportunities may arise that could alter the prescribed goals and objectives. However, it is intended that these guidelines remain as priorities even in the event of the introductions of an alternative opportunity that was not anticipated.

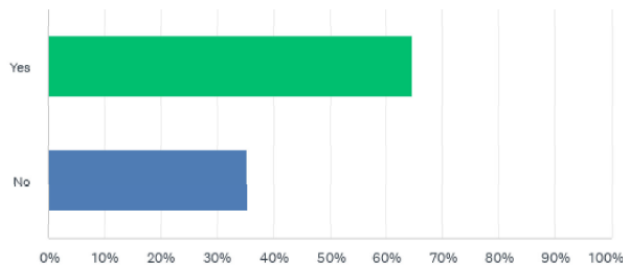
APPENDIX A

Summary of Citizen Survey Input

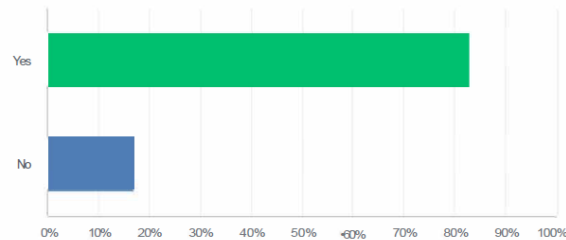
A link to an online survey was distributed in the newsletter sent to all residents with their tax bill and was available on the website. Residents had the option of completing it on-line or filling out the included paper copy and turning it in to the Township. Thirty-three surveys were submitted with over 50% of respondents having lived in the Township for more than 20 years.



Q2 Have you visited Robinson Township Park in the last year?



Q3 Besides the Robinson Township Park, have you visited any park located in Robinson Township in the past year?

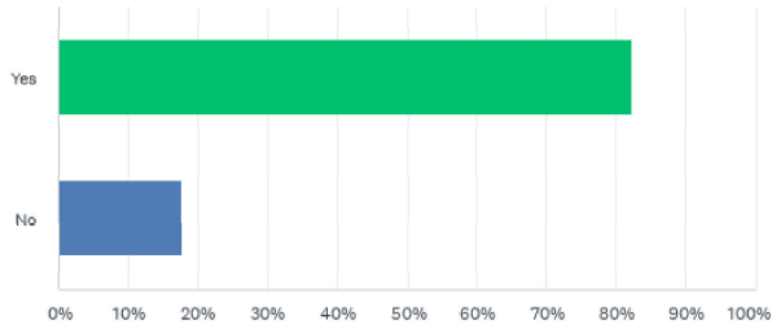


Q4 What activities do you participate in at the Parks?

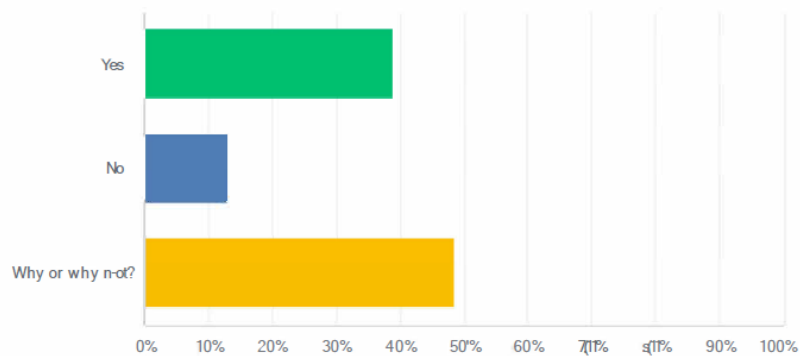
Answered: 33 Skipped: 2

#	RESPONSES
1	kayaking, special events (Connor Park)
2	walking, taking grandchildren to play on equipment
3	softball and walk the trail
4	riding bike, watching river
5	Walking trails
6	Walk my dog as often as possible
7	Pickleball, hiking, bird watching
8	HIKING TRAILS
9	Walk on trails with my dog
10	Hiking, snowshoe, ski, biking
11	Walk my dog as often as possible
12	Walking, biking, boat launch
13	Walking, viewing, nature
14	Walk our dog and picnic
15	Pickleball and walking trails
16	None
17	None
18	Hiking, walking, Tennis, skiing
19	walking, tennis, pickelball, open house, biking,
20	Walks with family, play structures, walking dog
21	Walking, hiking, open space.
22	Tennis and Hiking
23	Watch softball games, take kids to playground
24	Disc Golf
25	
26	31 The kids and I play soccer
27	32 Walking trials, kid's park
28	33 Biking, hiking
29	Hiking, biking, swimming (not at our parks)
30	Hiking, sledding, playing sports and using the playground.

Q5 Do you know what NORA is and the programs they offer?



Q6 If you do know what NORA is, are you in favor of Robinson Township continuing to support NORA?



Q7 What improvements/additions would you like to see for the Robinson Township Park?

Answered: 29 Skipped: 6

#	RESPONSES
1	see above regarding transportation
2	A great park the way it is.
3	restroom, fence in the ballfield, fence the parks property, install more cameras
4	none
5	Pickleball court
6	Kids need to find & pursue interests in NORA offers things schools can't
7	NOT SURE, HAVE THEY INCLUDHGA OURFACILITES/PARKB
8	Playground and trails easier to access
9	Baseball and softball scoreboard
10	Pickleball court
11	More pickleball courts, better walking trails
12	I think it's a very positive direction for robinson township twp
13	More pickleball courts and music in the park
14	Music in the park again
15	Have handicap assessable equipment/features
16	Maintain some open spaces. Add walking trails. Add EBike and EV charging stations. Lighting for ball field and court
17	An extension of the bike path from Lincoln along Lincoln
18	No improvements needed.
19	Maintenance of tennis court -Protect tennis from pickle ball
20	Better restroom facilities
21	Disc Golf tees and baskets
22	Unknown
23	Would love a hall to rent for parties
24	A permanent toilet, community events
25	A swimming pool - public to teach lessons (mostly kids but open to everyone.. we live with water everywhere and we should all know how to swim)and get exercise
26	New playground equipment. There are so few playgrounds for children in Robinson. It's sad that this park is in such TERRIBLE shape and unsafe for children. Even some basic, simple structures would be wonderful.
27	Soccer field is in rough shape and unsafe.
28	Running Track or shuffle board court
29	None

Q8 Comments or suggestions to help with updating the Recreation Plan.

Answered: 16 Skipped: 19

#	RESPONSES
1	All roads leading up to the park are paved. This makes the park more of a centerpiece.
2	The Park is a great asset to Robinson Township
3	Additional pickleball courts
4	BATHROOM OR BETTER THAN PORTA JON
5	None
6	Seasonal events in conservation with township hall
7	Pickleball tournaments
8	Utilize proximity to other parks and connections to recreation paths, i.e. Idema Trail. Expand childrens play area
9	Recreation is important and I support it.
10	appreciate our parks
11	You are doing a great job! Thank you!!
12	Also support Four Pointes Senior Center please.
13	Thanks for all you do. Please keep supporting public places to recreate.
14	Build a pool
15	PLEASE connect with the Parks & Rec department to FINISH, if not extend, the bike path. Many children and families in the township are unable to safely bike toward town or around our community. Drivers are increasingly distracted, this is of great concern.
16	Cut back on spending

APPENDIX B

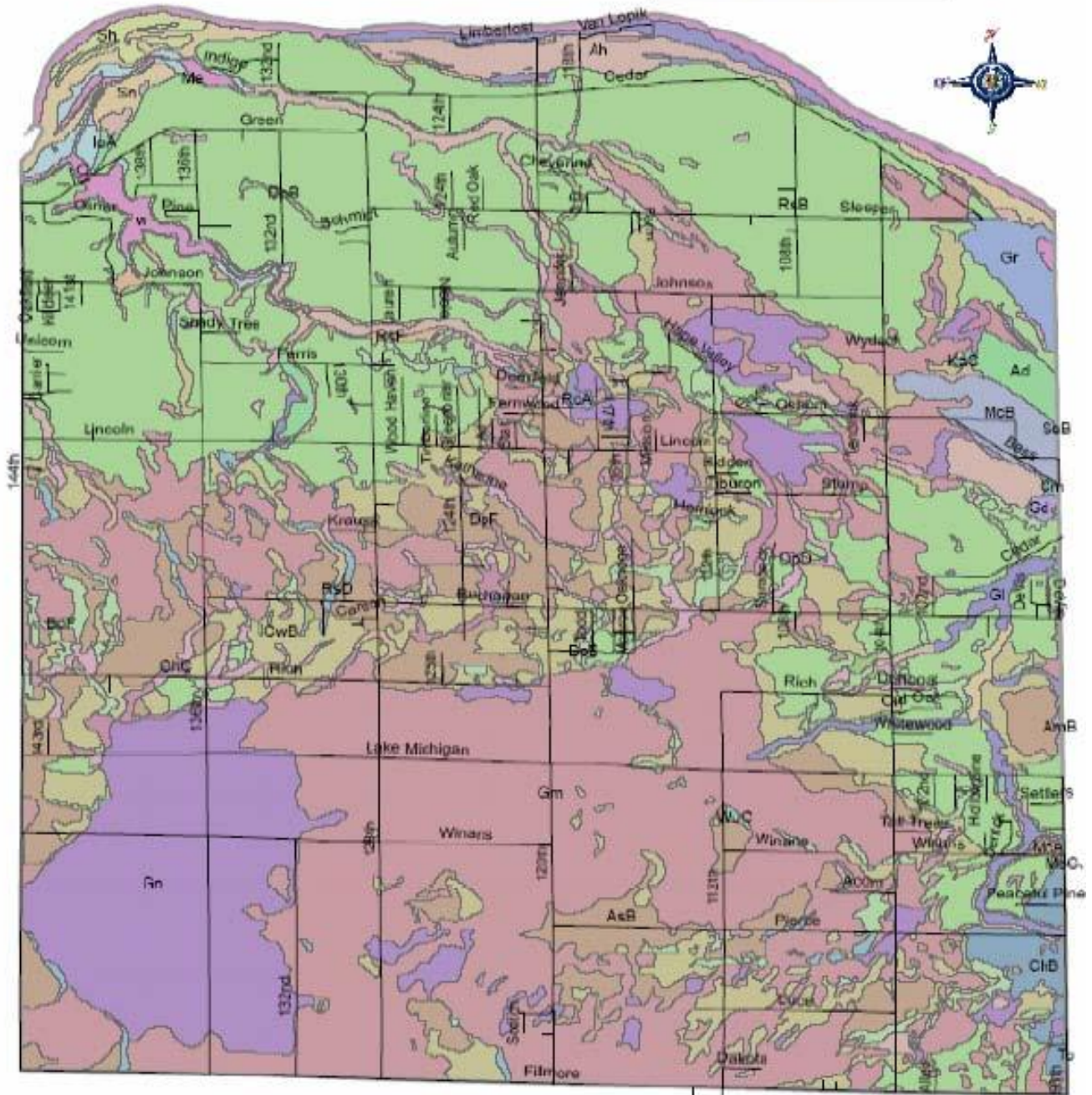
Soils Robinson Township



© Copyright 2005 Illinois County
This map has been developed through the
Illinois County Geographic Information System
and is made available to the public by Illinois County
Public Health and Safety Department
Publication Date: April 2005

ISS Description:
12225 Robinson Township, State 173
Map Scale: 1:25,000
Phone: 618-738-4330
Fax: 618-738-4330
www.gis.ilgob.com

Legend			
Code	Gm	Gr	RaD
Au	CwB	IsA	RaF
Ah	DpB	KaC	RaR
AmB	DdD	MoA	Sh
AeB	DpF	MuB	Sh
AbB	Gu	MuC	Te
BvF	Gl	Ma	WuC
ChB	Gm	RoA	W
ChC	Gh	ReB	Roads



APPENDIX C

Layout of the Robinson Township Park

